

4

3

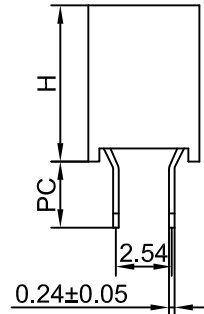
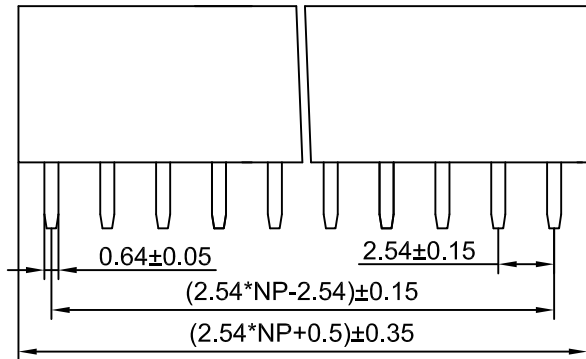
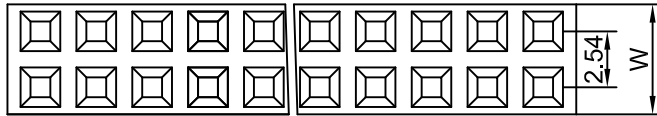
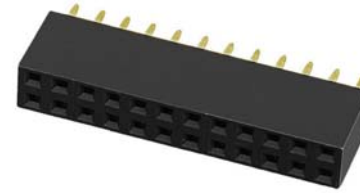
2

1

CROWN LINK®

專業薄膜開關連接器第一品牌

ROHS



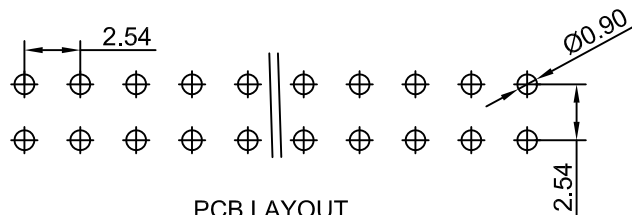
◆ Specifications

- 1.Current Rating:3Amps
- 2.Insulation Resistance:1000 MΩ min
- 3.Dielectric withstanding Voltage: AC 500V
- 4.Contact Resistance:30 mΩ max
- 5.Operating Temperature:-25℃ to+85℃
- 6.Contact Material: Phosphor bronze
- 7.Insulation Material:As follows
- 8.Plated: As follows

◆ PART NO.

L308 XX -XX 0 X X XX X

2.54mm double row	PLASTIC HEIGHT H*W	PIN NO. 1~40	0=180° 1=90° 2=SMT	MATERIAL 1、PBT 3、NY6T 4、LCP 5、NY66 7、NY46 8、NY9T	PLATED 0、Au0.8u" 1、Au1u" 2、Au1.5u" 3、Au2u" 4、Au3u" 5、Au5u" 6、Au10u" 7、Selective gold 8、Tin 9、Matte-Tin	SERIES NO. 01~69:Without a column 70~89:With inside column 90~99:With outside column	PACKAGE A=bag B=tubes C=tray D=reel
50=5.0*5.2	57=5.7*5.0	71=7.1*5.0	85=8.5*5.0				



PCB LAYOUT

				LINER	ANGLES
				.0 ±0.30	0.° ±2°
A	FIRST DRAWING	MARY	2017.08.23	.00 ±0.20	.0° ±1°
REV/版本	MODIFIED CONTENT /變更內容	DRAWN/繪圖	DATE/日期	.000 ±0.10	.00° ±0.5°
				TOLERANCE RANGE/公差範圍	

DRAWN/繪圖	DATE/日期	CROWN LINK® THE LEADING MANUFACTURER OF FPC & FFC CONNECTOR, HOUSING AND DOME.			
MARY	2017.08.23	PRODUCT NAME/品名			
CHECK BY/審查	DATE/日期	PH2.54*H 2*NP 180° DOUBLE ROW FEMALE HEADER TYPE-U			
VIVIAN	2017.08.23	PART NO./料號	PIN NUMBER/針數	SCALE/比例	SIZE/圖號
APPROVED BY/核准	DATE/日期	L308XX-XX0XXXXX	02P-80P		A4
WENDY	2017.08.23	MATERIAL/材質	COLOR/顏色	ANGLE OF VIEW/視角	UNIT/單位
PACKAGE/包裝			BLACK COLOR	⊕	mm
				SHEET/頁碼	REV/版本
				1 OF 1	A

D

D

C

C

B

B

A

A